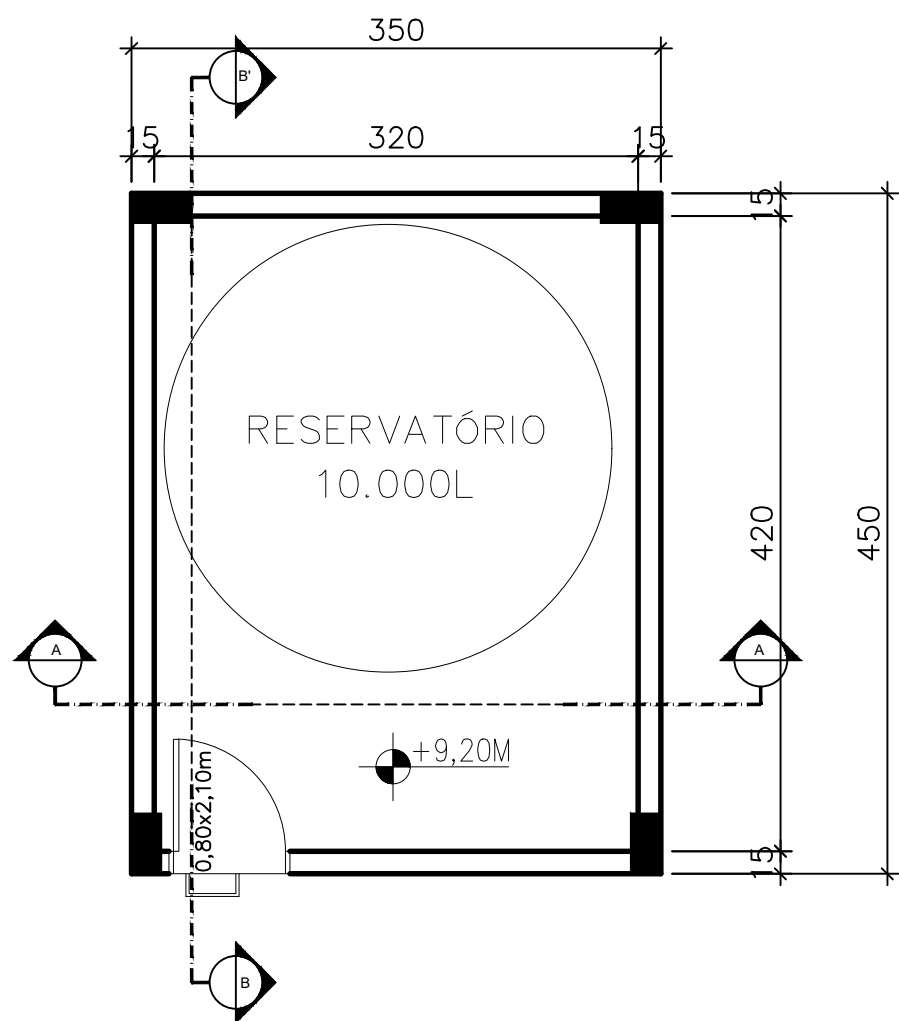
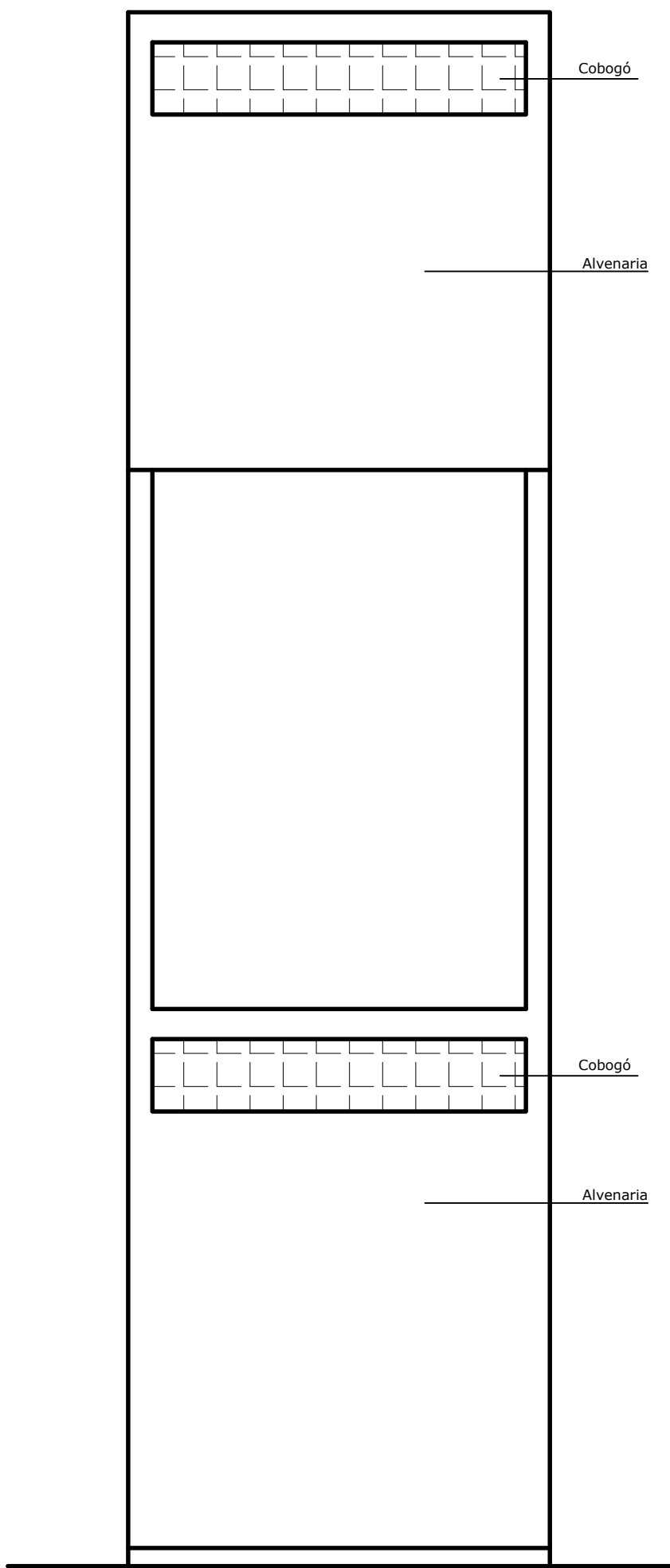


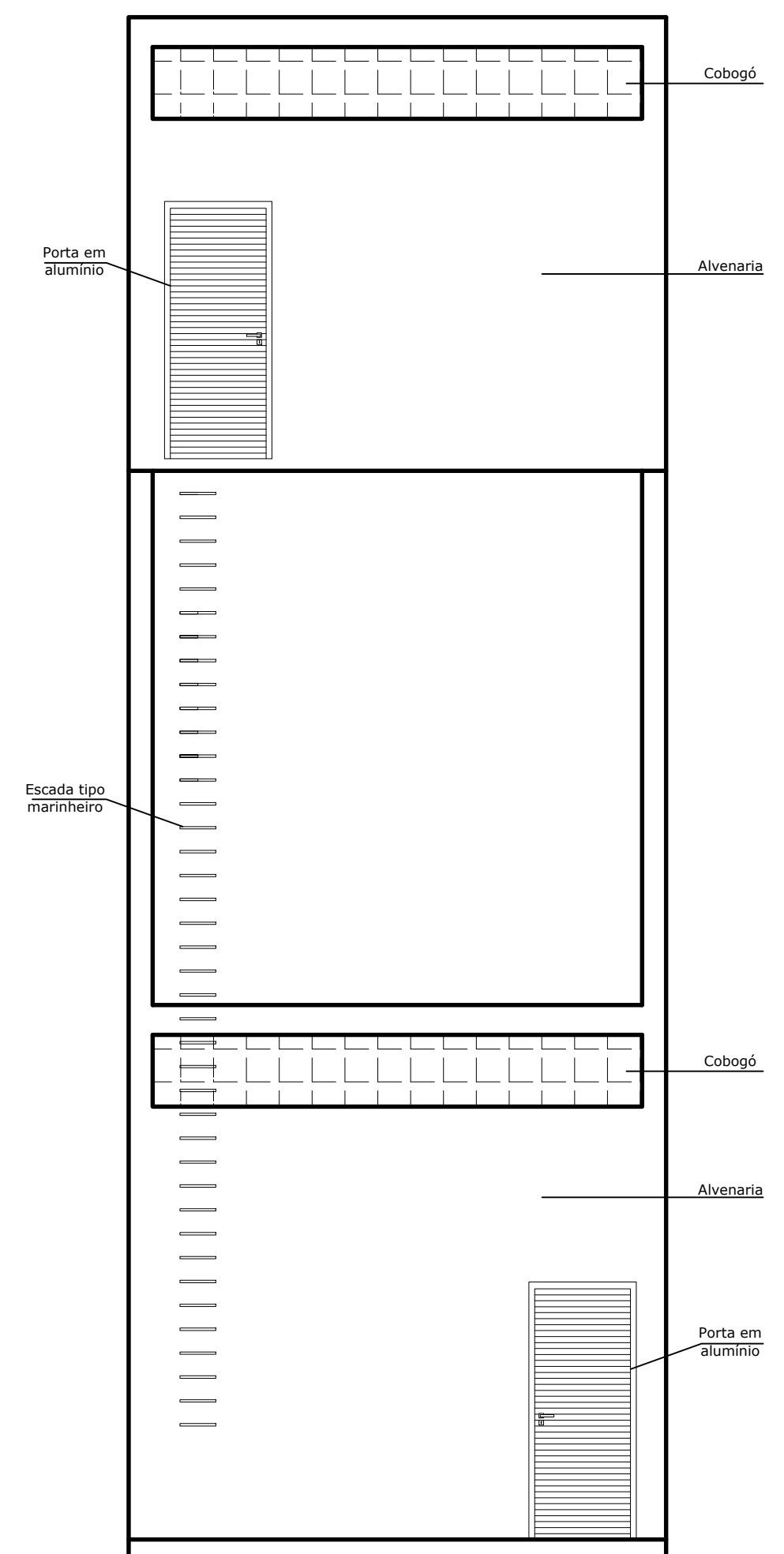
PLANTA BAIXA VOLUME RESERVATÓRIO
TÉRREO
ESCALA 1:50



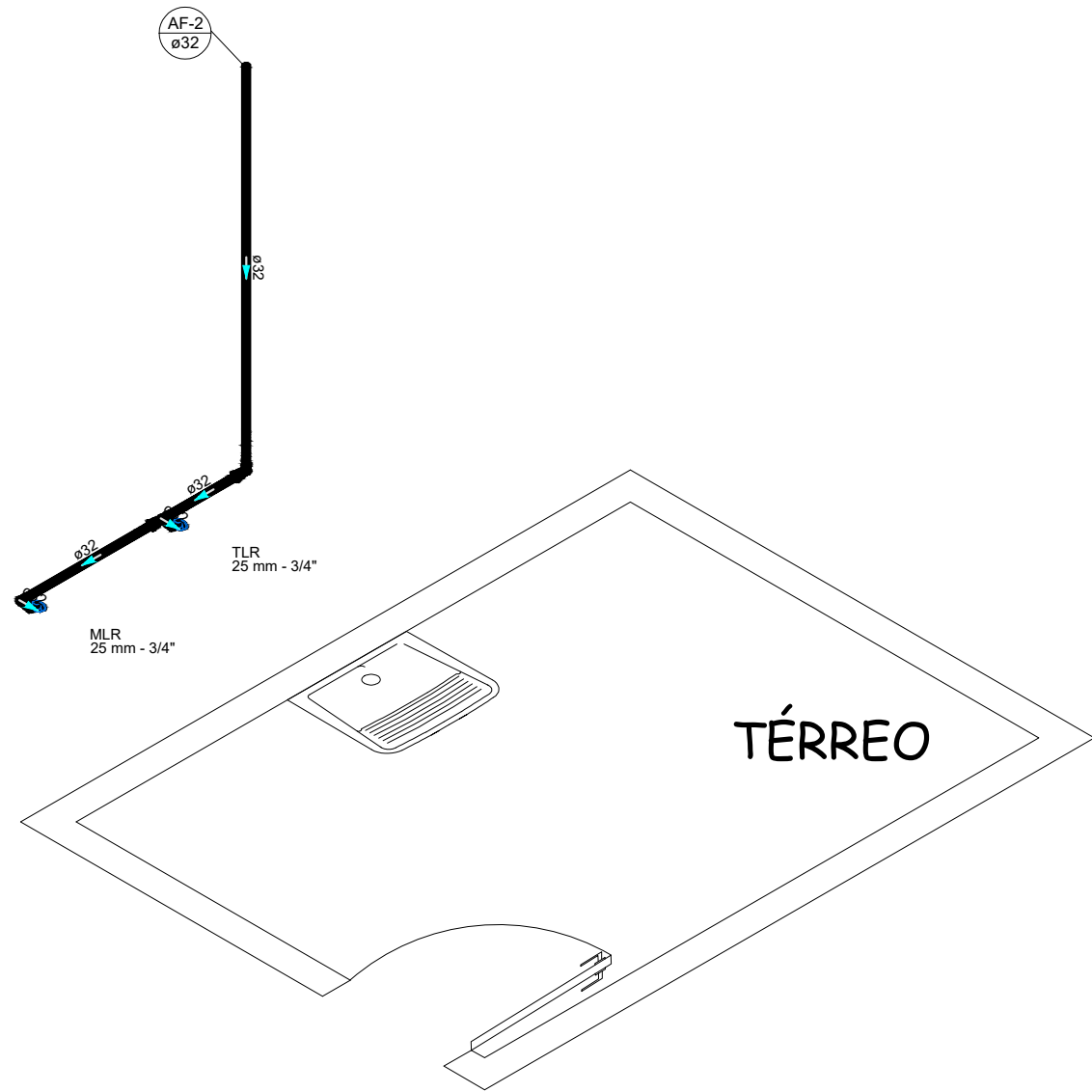
PLANTA BAIXA VOLUME RESERVATÓRIO
NÍVEL RESERVATÓRIO
ESCALA 1:50



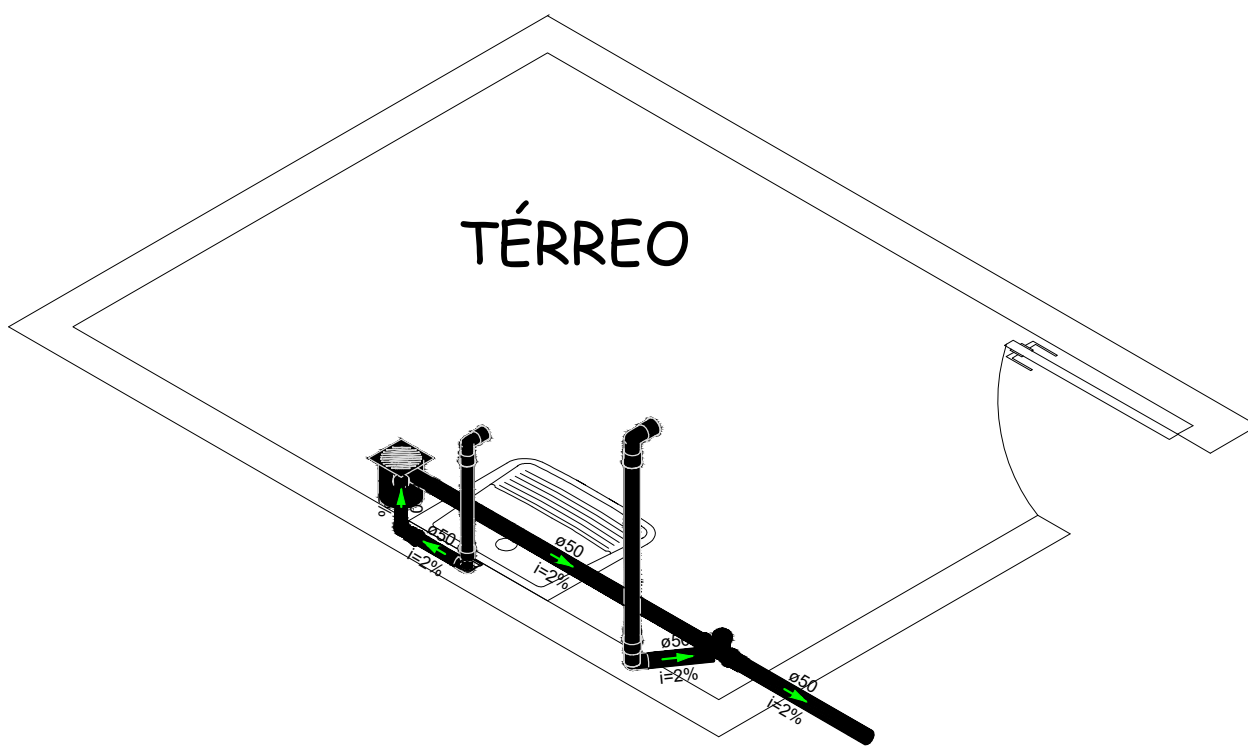
FACHADA 01
ESCALA 1:50



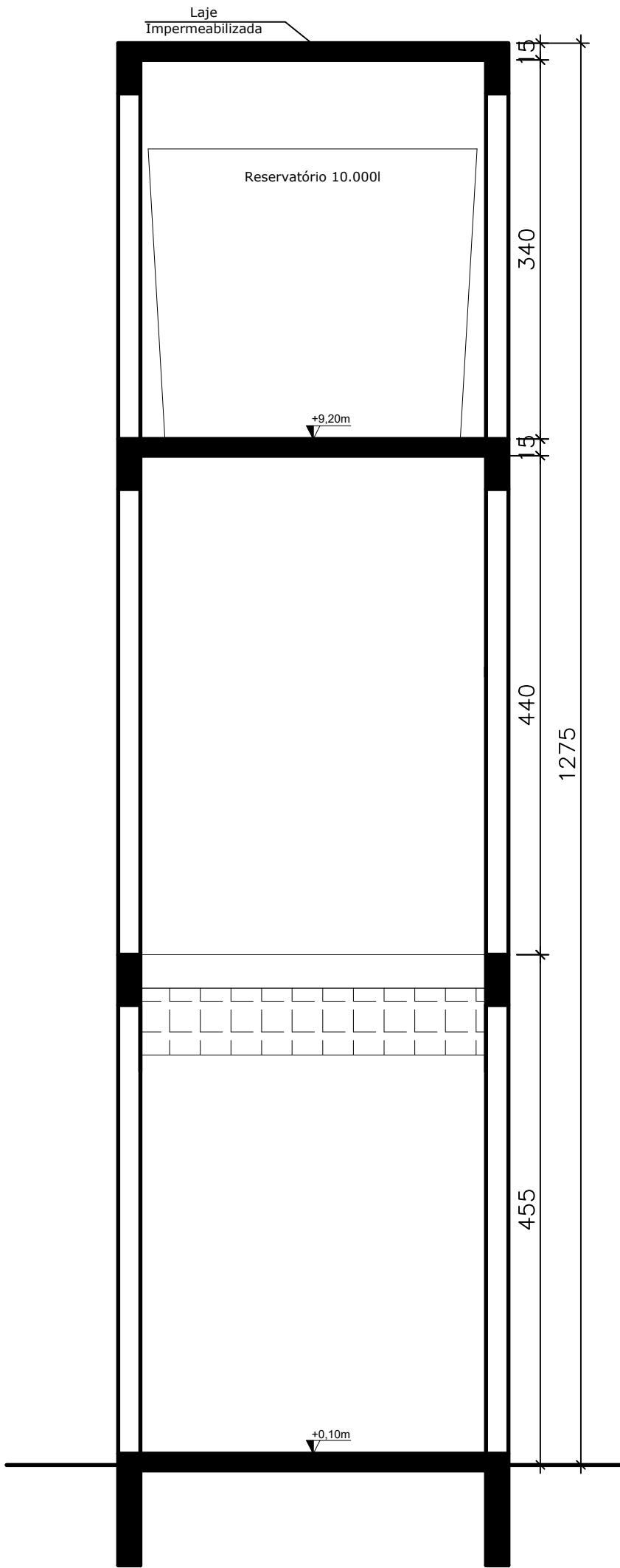
FACHADA 02
ESCALA 1:50



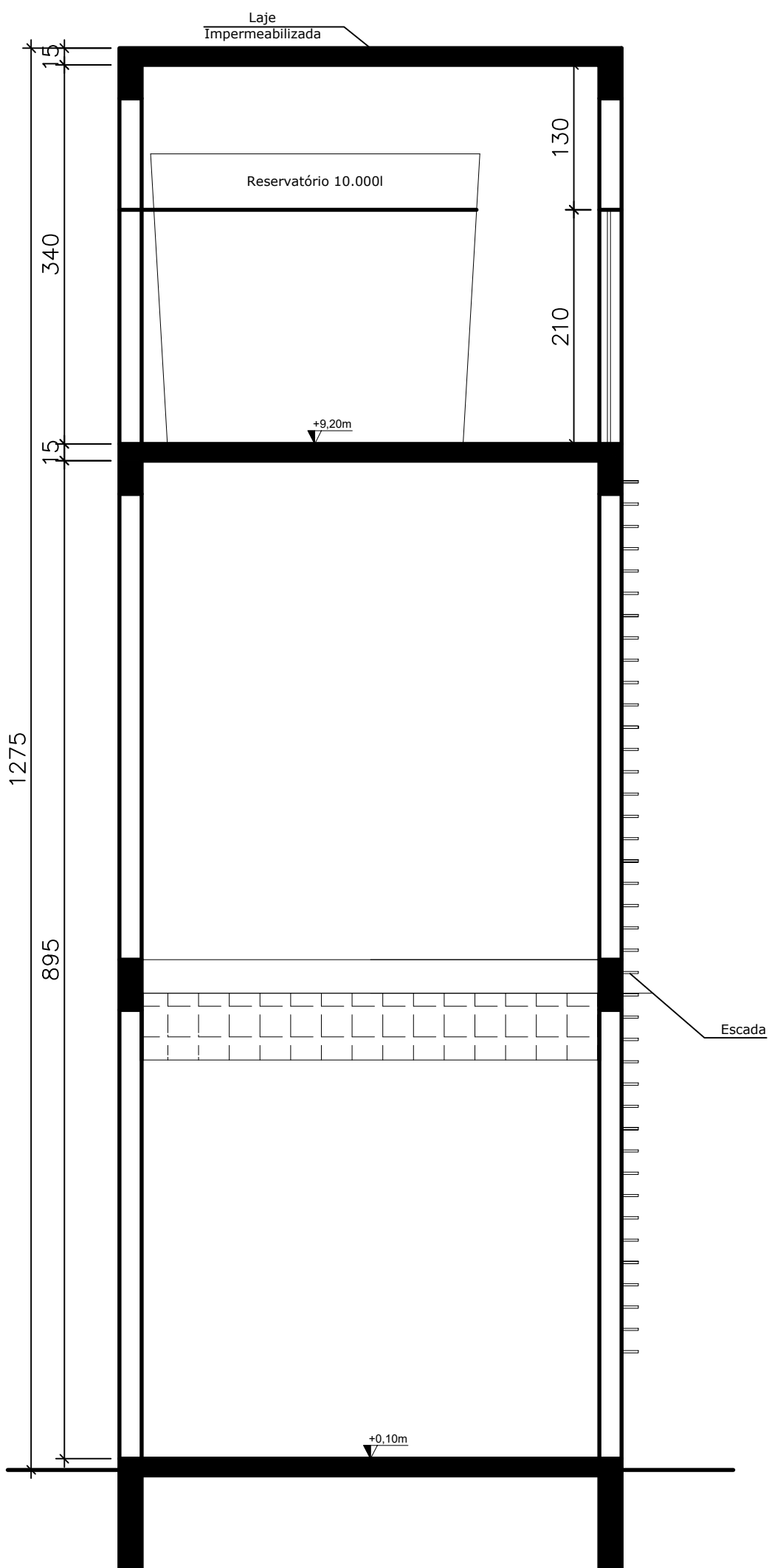
DETALHE HIDRO
SEM ESCALA



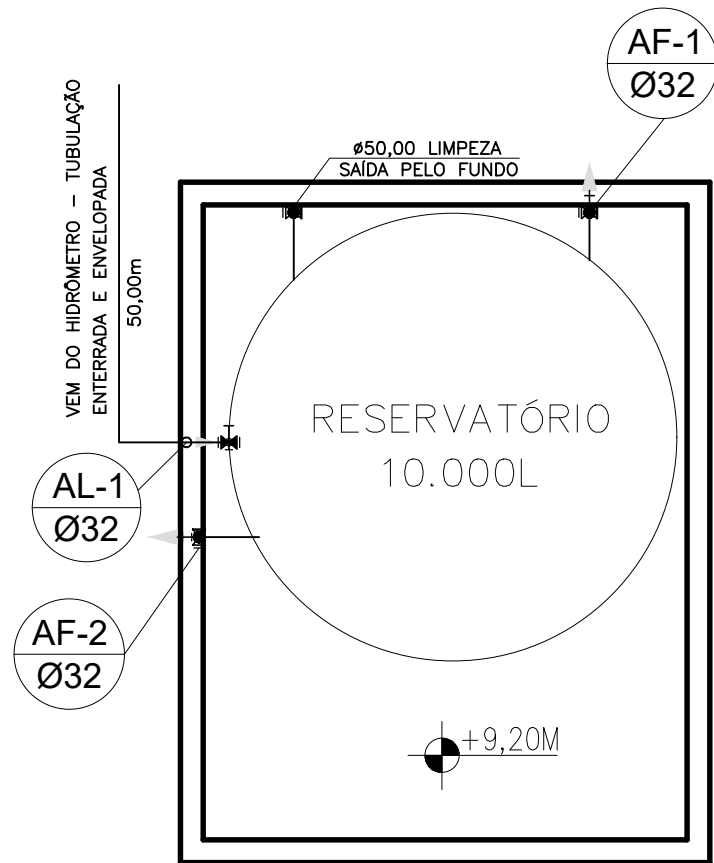
DETALHE HIDRO
SEM ESCALA



CORTE AA
ESCALA 1:50




CORTE BB
ESCALA 1:50



DET HIDRO
ESCALA 1:50

AF-1 - ALIMENTA A REDE DE HIDRANTES
AF-2 - ALIMENTA A REDE DE CONSUMO

		TISCOSKI	
		ARQUITETURA E ENGENHARIA	
PROJETO ARQUITETÔNICO			
RESERVATÓRIO — EEB ZULEIMA BURIGO GUGLIELMI RUA RAFAEL MACCARI, 355 PRINCESA ISABEL, MORRO DA FUMAÇA/SC		CONTEÚDO —PLANTA BAIXA —DETALHES	PRONCHIA 01/01
PROPRIETÁRIO: MUNICÍPIO DE MORRO DA FUMAÇA CNPJ 83.000.323/0001-01		RESPONSÁVEL TÉCNICO: HJ ARQUITETURA E ENGENHARIA LTDA — CREA-SC 187117-2 JULIANA DA SILVA TISCOSKI — CREA-SC 123317-7	
ESCALA INDICADA	DESENHO AMANDA	ÁREA TOTAL 31,50m²	DATA AGOSTO/2025